

# Super Hydrophobic Coatings & Treatments

---

The future of building material protection



# TABLE OF CONTENTS



02	About ProPERLA UK
04	Super Hydrophobic Technology
06	Breathability
08	Tested & Certified
10	Quality Standards
11	Verified by the Energy Saving Trust
12	Product Guarantees
13	Efflorescence & Sulphate Attack
14	Penetrating Damp
15	RENOTEC Roof Coating
17	ProPERLA Water Repellent
19	ProPERLA Facade Coating
21	ProPERLA Masonry Creme
23	ProPERLA Wood Impregnator
25	ProPERLA Paving Impregnator
27	ProTHERM Interior Thermal Matt



## We at ProPERLA UK are proud to be ushering in a new era of building material protection.

We are a family owned and run business with over 35 years experience in the exterior coatings industry. Here at ProPERLA UK we are passionate about offering the most advanced exterior coatings & treatments available in the UK today. **Innovation, quality, ethical practice & sustainability** are in pillars that underpin everything we do at ProPERLA UK, working closely with our network of approved applicators to provide building protection in both the commercial & domestic sectors.

We run our own dedicated training course to ensure that approved applicators of ProPERLA products are equipped with the specialist knowledge required in order to apply our exterior coatings to the highest possible standards. We also offer a product guarantee system that allows approved applicators of ProPERLA products to issue manufacturer guarantees of between 10-20 years, validating the long-term performance of the coatings in any weather conditions.

Our dedicated customer support team are always on hand to provide round-the-clock technical support throughout the duration of projects undertaken using ProPERLA products. For more information visit [properla.co.uk](http://properla.co.uk) or call **0161 763 7074**.



# ABOUT PROPERLA UK

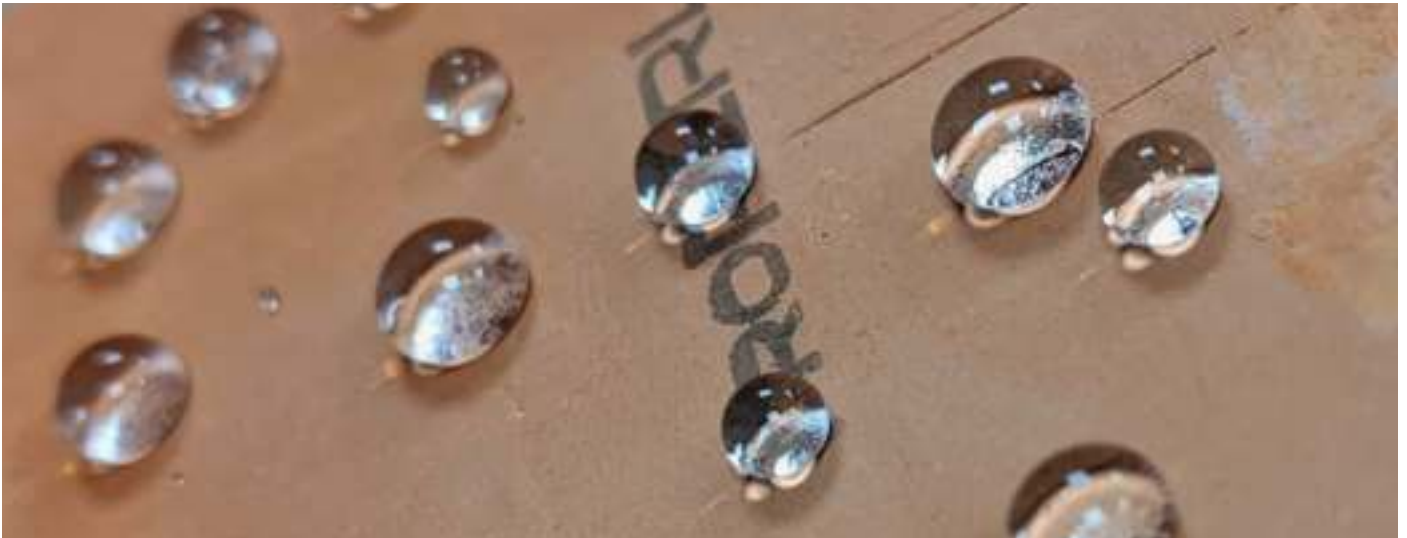


Built to withstand the harshest  
weather conditions.



# Super Hydrophobic Technology

---



---

## What is super hydrophobic technology?

When water comes into contact with a super hydrophobic surface, the water droplet forms a spherical bead and simply rolls off, leaving the surface dry. As the water beads roll off, they also pick up contaminants such as dirt particles, organism liquids and biological contaminants and remove them from the surface. This makes super hydrophobic surfaces self-cleaning, as dirt simply washes away with the water,

This super hydrophobic effect is present in nature with the Lotus leaf, which possesses self-cleaning and extreme water-repellent abilities. This is why super hydrophobic technology is often referred to as 'The Lotus Effect'.

## Super hydrophobic coatings

Super hydrophobic technology is ushering in a new era in exterior coatings and building protection. Here at ProPERLA, we have developed highly advanced super hydrophobic coatings and treatments that are designed to reduce energy costs and protect homes.

Moisture in building materials is a key driver to energy loss as wet materials transfer heat much quicker than dry materials. Tests have shown that a damp content of 5% in a plain brick wall can lower the insulation performance by up to 50%. By keeping walls dry, ProPERLA super hydrophobic coatings

help to improve thermal efficiency.

Preventing water absorption can also help to prevent the deterioration of exterior building materials. Moisture is one of the biggest causes of damage to building materials. By preventing water absorption, ProPERLA super hydrophobic coatings slow the ageing and breakdown of the surface of the building, helping to protect it from the damaging effects of the weather including wind driven rain, frost and high air humidity.

The prevention of water absorption has a number of other benefits. The growth of moss, algae and lichens is discouraged, as the moisture that allows this natural growth to develop is reduced. This helps not only to improve the appearance of exterior surfaces, but also to maintain the integrity of the material. Furthermore, by preventing water ingress on building materials, discolouration caused by damp patches is also reduced.

Keeping building materials dry is the key to maintaining clean and warm exterior surfaces that stay protected against the damaging effects of weathering. That is why ProPERLA super hydrophobic technology is revolutionising the way building materials are protected, with our range of treatments for exterior surfaces, including masonry, roofs, timber & paving.





**The future is here.**

Super hydrophobic technology  
from ProPERLA

What sets ProPERLA super hydrophobic technology apart?

# Breathability

---

Breathability refers to the ability for water vapour to travel through a substrate or coating. This is also known as 'water vapour permeability'.

Unfortunately, in the paint and coatings industry, there are a large proportion of products that are not breathable. If a surface is not breathable, water vapour from inside the material will slowly build up as it has no escape outlet. Eventually, over time this will cause significant problems to the surface, as the moisture continues to gather.

In the UK, there has been a large amount of misinformation regarding waterproofing products and breathability. The term 'sealer' is a commonly used one, which has led to the misinterpretation of waterproof technologies. A sealer is a waterproofing product that aims to prevent water absorption by creating a waterproof film on the surface of exterior building materials. Sealers work on the surface of the material, sealing the surface from water ingress. This film while keeping moisture out can also prevent

moisture inside the material from escaping. This lack of breathability means that sealers can cause significant damage to surfaces, especially masonry where the trapped moisture can lead to widescale internal damp problems as condensation from inside a property accumulates.

Eventually, when moisture builds up within the material it causes the film of the sealer to break under the pressure. This is why the many sealers come with lifespans anywhere from 1-5 years.

This is where ProPERLA nano-technology comes in. ProPERLA products chemically bond to building materials, lining the pores of the substrate without sealing the pores. By not sealing the material the breathability of the substrate is maintained. The combination of water repellent properties and high breathability is what gives ProPERLA products lifespans in excess of 25 years, as they will not peel or flake due to a build-up of moisture.





**"Having been in the industry for 20 years, ProPERLA products are second to none."**

QES Exteriors





# Tested & Certified

ProPERLA coatings have been rigorously tested and certified by numerous independent bodies.



## Independent testing

ProPERLA products have been rigorously tested and certified by the UKAS accredited testing laboratory, Lucideon in order to demonstrate their superior performance. Lucideon is an independent materials testing and analysis laboratory. Using their state-of-the-art facilities and scientific expertise, Lucideon can thoroughly test product performance and provide impartial results.

In 2018, ProPERLA wall coatings were tested to ensure they are fit for purpose and conform to regulations. Specifically, the tests were conducted to determine performance after 25 years of accelerated weathering and to test and analyse the thermal insulating properties, breathability and water repellency of the coatings. The 25 accelerated weathering test would subject the coatings to repeated heat-rain cycles followed by heat-cold cycles to discover their performance in harsh weathering conditions. On completion of the weathering test, both ProPERLA Masonry Creme and ProPERLA Facade Coating were found to have **passed all four tests**. ProPERLA wall coatings showed no deterioration either in performance or aesthetic appearance. Bricks coated with ProPERLA were found to be more energy efficient than uncoated ones, with the uncoated wall showing on average an increase of 6°C of heat loss in comparison to the coated walls. Neither ProPERLA Masonry Crème nor ProPERLA Facade Coating adversely affected the breathability, with SD values of 0.03 and 0.01 respectively. Lastly, the coatings were found also to **reduce water absorption by up to 96.3%**, demonstrating the coatings ability to prevent water ingress.

In 2021, we took our roof treatments, RENOTEC Roof Coating and ProPERLA Water Repellent, plus our timber treatment, ProPERLA Wood Impregnator, to Lucideon to conduct 25-year accelerated weathering tests on the coatings to verify their durability. On completion of the weathering test, all products showed no evidence of deterioration such as cracking, delamination or water penetration, demonstrating a **25 year performance**. The prod





**Protect & Transform.**

With ProPERLA exterior coatings.



# Quality Standards

ProPERLA products have been tested to the following Quality Standards.

---



1

## RENOTEC Roof Coating

- EAD 040287-00-04:2018 – 25 year performance
  - BS EN ISO 12572:2016 – water vapor permeability
  - BS 539-1:2005 – water impermeability
  - DIN EN ISO 53054 - tensile strength
  - DIN EN ISO 4624 - pull-off test for adhesion
- 

2

## ProPERLA Water Repellent

- EAD 040287-00-04:2018 – 25 year performance
  - BS EN ISO 12572:2016 – water vapor permeability
  - BS 539-1:2005 – water impermeability
  - EN1504-2:2005, - depth of penetration, water absorption, resistance to alkali
- 

3

## ProPERLA Masonry Creme

- EAD 090062-00-0404 – 25 year hygrothermal performance
  - EAD 040083-00-0404 – external thermal insulation composite
  - BS EN ISO 7783 – 2011 – water vapour diffusion
  - BS EN ISO 12572 – water vapour resistance
- 

4

## ProPERLA Facade Coating

- EAD 090062-00-0404 – 25 year hygrothermal performance
  - EAD 040083-00-0404 – external thermal insulation composite
  - BS EN ISO 7783 – 2011 – water vapour diffusion
  - BS EN ISO 12572 – water vapour resistance
- 

5

## ProPERLA Wood Impregnator

- EAD 040287-00-04:2018 – 25 year hygrothermal performance.
  - EN 15824:2009 – water absorption, water vapour permeability, tensile strength, thermal conductivity and long term durability
- 

6

## ProPERLA Paving Impregnator

- EN1504-2:2005 – depth of penetration, water absorption, resistance to alkali, drying rate and thermal conductivity
- DIN 4108 – European rating for water repellency.

# Verified by the Energy Saving Trust

We are very proud that ProPERLA wall coatings have been verified by the Energy Saving Trust following their rigorous and independent review process.

Evidence including independent laboratory tests, European Certifications and our manufacturing and quality control procedures were reviewed and it was concluded that application of ProPERLA wall coatings leads to improvements in the thermal efficiency of exterior walls.

When ProPERLA wall coatings were tested in the 25 year accelerated weathering process, they were found to be in accordance with **EAD 090062-00-0404 - external thermal insulation composite.**

The logo for the Energy Saving Trust, featuring the words "energy saving trust" in white lowercase letters on a dark blue rectangular background. To the right of the text is a small graphic consisting of two squares, one green and one blue, arranged in a 2x2 grid pattern.

energy  
saving  
trust

verified  
by



# Product Guarantees

All ProPERLA exterior coating products benefit from a manufacturer's performance guarantee of between 10-20 years.

These manufacturer guarantees ensure the performance of the product for the duration of the guarantee period.

While ProPERLA super hydrophobic coatings come with these 10-20 year manufacturer guarantees, independent testing has demonstrated that the coatings will far exceed this, often with a proven 25 year performance. ProPERLA super hydrophobic coatings could far exceed this 25 year period, as on completion of 25 years' accelerated weathering, they showed no signs of deterioration.



# Efflorescence & Sulphate Attack

Many homeowners in the UK will be familiar with the sight of a white powdery substance appearing on the walls of their properties. This is known as '**efflorescence**' and is a sign that there is moisture within the building materials of the property. Although harmless in itself, it needs to be dealt with in the correct way to avoid further moisture-related problems in the future which can cause more serious structural damage.

Three conditions must be present for this white substance to appear:

- There must be water soluble salts present somewhere in the materials used in the construction the property.
- There must be sufficient moisture in the wall to render the salts into a soluble solution.
- There must be a path for the soluble salts to travel through to the surface of the walls, where the moisture will then evaporate, leaving behind the salts. The salts crystallise and cause the sparkly, white residue which is a familiar sight to many.

Building materials such as brick, stone, concrete and render are all porous, meaning they will allow water to absorb. This water ingress dissolves the mineral salts contained naturally within many of the building materials, when they come into contact with water. As the moisture present within the material evaporates, it causes the salts to be drawn to the surface of the building material. This salt is then deposited on the wall. Efflorescence will only stop forming when moisture is prevented from interacting

with the naturally occurring salts. While efflorescence in the short-term is not harmful to the property, it is an indicator of a larger issue at hand. Having said this, efflorescence can lead to sulphate attack, which can be harmful. Sulphate attack is caused by the reaction between the salt and the mortar, which creates a new compound that expands as it forms. This movement leads to cracking in the mortar joints of a property, which over time will lead to general deterioration and the loss of integrity in the masonry.

While efflorescence is easy to identify on the exterior wall of a property, it is can't always be seen. On properties with a cavity wall construction, the internal leaf of the building can suffer from efflorescence and sulphate attack. As this efflorescence can't be seen, sulphate attack can go undiagnosed until the damage has occurred. This occurs when the water-soluble salts are drawn to the internal side of the masonry, rather than the external side.

This was clearly demonstrated during independent testing, when large salt deposits were found on the internal leaf of a brick wall that was subject to 25 years accelerated weathering. The testing showed that a bare brick wall (in the middle) had significantly more efflorescence than the part of the walls treated with ProPERLA wall coatings (right and left). This is because the water ingress that causes water-soluble salts to dissolve is prevented, ensuring salts aren't drawn out of the material. For this reason, ProPERLA wall coatings are a highly effective treatment for efflorescence, preventing the movement of salts and ensuring that the deposits do not lead to sulphate attack on the mortar of brickwork.

A brick wall that was tested under 25 years weathering. The middle section was left untreated. The left section was coated using ProPERLA Masonry Creme & the right section was coated with ProPERLA Facade Coating (see image).



The uncoated bricks (the middle third) showed evidence of water penetration & significant salt efflorescence (see image).



# Penetrating Damp

Treatment and prevention with  
ProPERLA wall coatings

There are many types of damp, but the two main types of damp are **rising damp** and **penetrating damp**. Rising damp is a relatively uncommon form of damp that occurs when moisture from the ground rises through a substrate. This is caused because of ground water, that gets soaked through the substrate steadily. Penetrating damp on the other hand is caused by water ingress on an exterior wall, caused by wind-driven rain. Natural mineral surfaces such as brick, stone and concrete are all porous, allowing the moisture to be soaked through the substrate and into a property. Surfaces previously painted using an acrylic-based masonry paint are also prone to water absorption as these coatings have little resistance to water ingress

When this moisture enters the building material, it undergoes a freeze-thaw cycle. This causes the moisture to freeze, which in turn means it expands while within the substrate. This expansion can allow cracks to open in the masonry, which in turn allows further moisture to enter, starting a continuous cycle of building material deterioration.

Any moisture that soaks into exterior walls can lead to penetrating damp issues, as the moisture will transfer through to the internal wall of the property. This is especially the case with solid wall properties that do not have a cavity wall. This means that there is nothing to prevent any moisture that absorbs into the external side of the wall travelling through into the internal wall of a property. Properties with a cavity wall are not always protected from penetrating damp however. Poorly fitted cavity wall insulation can create a bridge for moisture to soak through into the cavity wall insulation and into the internal wall of a property.

This water ingress leads to problems relating to black mould as the internal wall becomes saturated. Damp can cause a host of problems not only for your home but for your health too. It is therefore essential to address any signs of damp as soon as possible.



ProPERLA wall coatings act as effective penetrating damp treatments thanks to two factors. The first factor is that they prevent water absorption by giving exterior walls super hydrophobic (ultra water repellent) properties. ProPERLA super hydrophobic technology **prevents up to 96% of water absorption**, ensuring moisture cannot soak the external wall of a property. The second factor that makes ProPERLA wall coatings effective penetrating damp treatments is their breathability. ProPERLA is not a sealant, meaning it does not trap moisture or impede water vapour from escaping from inside the building and evaporating naturally. If a non-breathable coating like a sealer is applied to a property, it will worsen damp problems. This is because the non-breathable coating will trap any water vapour inside the property, which naturally forms from condensation. ProPERLA Facade Coating benefits from an SD rating (breathability rating) of 0.06 whilst ProPERLA Masonry Creme has an SD rating of 0.03, both much lower ratings (and therefore more breathable) than an SD rating of 0.5 which is considered breathable by industry standards.

# RENOTEC Roof Coating

**A super-hydrophobic coloured roof coating that extends the life span of roof tiles by improving their resistance to weathering. The roof coating also improves the appearance of roof tiles and comes with a proven 25 year performance in all weather conditions.**

## Key Features

- For use on all mineral roof tiles including concrete, clay & fibro cement
- Manufactured in Germany using the very latest nano-technology
- Super hydrophobic coating - treated surfaces repel water
- Highly breathable
- Creates a self-cleaning surface
- Undergone UKAS accredited testing
- Comes with a 10 year manufacturers guarantee & a 25 year life expectancy
- Helps to extend the life span of the roof tiles
- Choice of colours available
- UV resistant
- Discourages growth of moss, algae and lichens



## Restore and Protect

RENOTEC Roof Coating provides a real alternative to the costly and wasteful decision to get a roof replacement. Applying RENOTEC not only improves the appearance of the roof but improves the performance. By keeping the roof tiles dry, RENOTEC Roof Coating:

- Extends the life span of the roof tiles
- Prevents the loss of structural strength in roof tiles through weathering, frost damage and salt efflorescence
- Obstructs the growth of unsightly moss, algae and lichens
- Resists UV degradation

## Proven Performance

RENOTEC Roof Coating has undergone independent testing and has been proven to meet the following Quality Standards;

- EAD 040287-00-04:2018 – 25 year performance
- DIN EN ISO 53054 - tensile strength
- DIN EN ISO 7783-2 - water vapour permeability

The roof coating has been shown perform in all weather conditions for 25 years without showing signs of deterioration, making it the most advanced roof coating available in the UK today.



## Colours

Our roof coating is available in a range of colours to help transform roofs from dirty and unattractive to looking like new. Colours include, Tile Red, Anthracite, Black Blue, Green, Dark Brown, Red Brown & Rustic Red.





*The most advanced roof coating available in the UK*

**RENOTEC Roof Coating**



**Treated**



**Untreated**



# ProPERLA Water Repellent

**A super hydrophobic advanced clear treatment for roof tiles that improves their resistance to weathering and discourages organic growth, ensuring roofs stay clean and pristine. The treatments offers invisible protection with a proven 25 year performance.**

## Key Features

- For use on mineral surfaces such as concrete, clay, slate and terracotta
- Manufactured in Germany using the very latest nano-technology
- Super hydrophobic coating - treated surfaces repel water
- Highly breathable
- Undergone UKAS accredited testing
- Comes with a 10 year manufacturers guarantee and a 25 year life expectancy
- Highly breathable
- One-coat protection
- Extends the life span of roof tiles
- Does not alter the appearance of roof tiles
- Discourages growth of moss, algae and lichens



## Roof Tile Protection

ProPERLA Water Repellent improves the performance of roof tiles by creating a super hydrophobic surface. This prevents up to 96% of water absorption, which ordinarily would soak into the roof tile. By keeping the roof tiles dry, ProPERLA Water Repellent:

- Extends the life span of the roof tiles
- Prevents the loss of structural strength in roof tiles through weathering, frost damage and salt efflorescence
- Obstructs the growth of unsightly moss, algae and lichens
- Ensures dirt particles are unable to attach to the roof tiles

Any organic growth such as moss thrives in wet and cold areas. What makes roofs susceptible to moss is the large number of nooks and crannies that allows the moss to attach to the surface. Furthermore, roof tiles are often made of porous materials, making them the perfect material for moisture, and thus weeds. This allows them to spread quickly and effectively across the roof in-between the roof tiles. The growth of the moss can move and damage the roof tiles.

By preventing water absorption, ProPERLA Water Repellent discourages this growth, helping to protect roof tiles from damage and deterioration.

## Proven Performance

ProPERLA Water Repellent has undergone independent testing and has been proven to meet the following Quality Standards;

- EAD 040287-00-04:2018 – 25 year performance
- EN1504-2:2005, - depth of penetration, water absorption, resistance to alkali

While ProPERLA Water Repellent comes with a manufacturer's guarantee of 10 years, the independent testing showed that after 25 years, there were no signs of deterioration of the surface and the treatment. This means that coating could far exceed a 25 year lifespan.





*Super hydrophobic, invisible  
protection for roof tiles*

**ProPERLA Water Repellent**



**Treated**



**Untreated**



# ProPERLA Facade Coating

A technically advanced coloured exterior wall coating which reduces water absorption by up to 93.4% by creating a super hydrophobic surface. ProPERLA Facade Coating is highly breathable, self-cleaning, heat retaining and comes with a proven 25 year performance.

## Key Features

- For use on mineral substrates that require a coloured coating
- Manufactured in Germany using the very latest nano-technology
- Super hydrophobic coating - treated surfaces repel water
- Highly breathable
- Creates a self-cleaning surface
- Insulates mineral building by keeping dry - shown to keep a treated wall 6°C warmer on average compared to an untreated wall
- Verified by the Energy Saving Trust
- Comes with a 10 year manufacturers guarantee and a 25 year proven performance
- Effective treatment for salt efflorescence and penetrating damp
- Discourages discolouration, moss, algae and lichens



## Exterior Wall Protection

ProPERLA Facade Coating not only improves the appearance of the building, it helps to maintain and protect it long term. By keeping exterior walls dry, ProPERLA Facade Coating:

- Deters the growth of moss, algae and lichens, ensuring exterior walls stay looking pristine
- Slows the ageing or breakdown of the surface of the building by helping to protect it from the effects of weathering
- Helps to prevent problems associated with penetrating damp and salt efflorescence

## Proven Performance

ProPERLA Facade Coating has undergone independent testing and has been proven to meet the following Quality Standards:

- EAD 090062-00-0404 – 25 year hygrothermal performance
- EAD 040083-00-0404 – external thermal insulation composite
- BS EN ISO 7783 – 2011 – water vapour diffusion
- BS EN ISO 12572 – water vapour resistance

While the product comes with a 10 year guarantee, after 25 years accelerated weathering testing, the coating showed no signs of deterioration in performance or appearance,



## Colours

ProPERLA Facade Coating is available in a range of popular light and pastel shades such as White, Light Grey and Cotswold Cream.





*A highly advanced super hydrophobic wall coating*

## ProPERLA Facade Coating

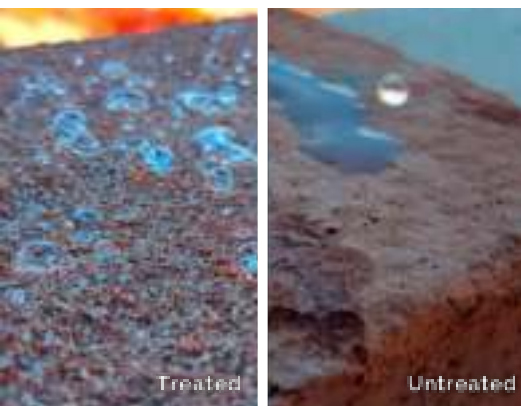


# ProPERLA Masonry Creme

**An advanced clear protective treatment which insulates mineral building materials by reducing water absorption by up to 96.3%. It chemically bonds to the surface, penetrating up to 17mm to create an invisible protective barrier with a proven 25 year performance.**

## Key Features

- For use on bare mineral surfaces such as brick, concrete and stone
- Manufactured in Germany using the very latest nano-technology
- Super hydrophobic coating - treated surfaces repel water
- Highly breathable
- Creates a self-cleaning surface
- Insulates mineral building by keeping dry - shown to keep a treated wall 6°C warmer on average compared to an untreated wall
- Verified by the Energy Saving Trust
- Comes with a 20 year manufacturers guarantee and a 25 year proven performance
- Effective treatment for salt efflorescence and penetrating damp
- Penetrates up to 17mm so does not alter the appearance of masonry



## A Clear Insulation Barrier

ProPERLA Masonry Creme creates a clear insulation barrier by providing exterior masonry with super hydrophobic properties. It achieves this by penetrating into the surface and chemically bonding to the material. By keeping exterior walls dry, ProPERLA Masonry Creme:

- Deters the growth of moss, algae and lichens, as well as ensuring dirt particles cannot attach to the wall thanks to self-cleaning properties
- Slows the ageing or breakdown of the surface of the building by helping to protect it from weathering
- Improves the insulation performance of exterior walls

## Proven Performance

ProPERLA Masonry Creme has undergone independent testing and has been proven to meet the following Quality Standards:

- EAD 090062-00-0404 – 25 year hygrothermal performance
- EAD 040083-00-0404 – external thermal insulation composite
- BS EN ISO 7783 – 2011 – water vapour diffusion
- BS EN ISO 12572 – water vapour resistance

The testing demonstrated that not only did the treatment perform for 25 years, but it also kept a treated wall 6°C warmer on average compared to an untreated wall,



## Application

ProPERLA Masonry Crème is a one coat application system which on application is white but it will dry clear and will not appearance of the building in any way by changing the colour or sheen level. The porosity of the substrate dictates how long it takes for the protective masonry cream to penetrate into the masonry and chemically bond to the mineral groups within the substrate.



*The ultimate protection for  
brickwork and masonry*

**ProPERLA Masonry Creme**



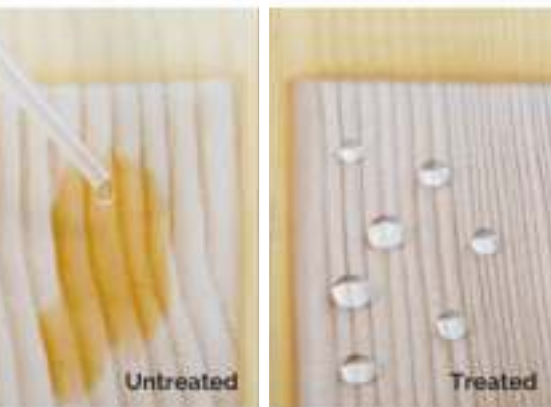


# ProPERLA Wood Impregnator

**An advanced, super hydrophobic clear water repellent timber treatment that protects exterior wood from decay & rotting by preventing water absorption. The timber treatment comes with a proven 25 year performance and a 10 year manufacturer's guarantee.**

## Key Features

- For use on all vertical bare timber such as wooden fencing, log cabins, wooden gates & exterior wooden beams
- Manufactured in Germany using the very latest nano-technology
- Super hydrophobic coating - treated surfaces repel water
- Highly breathable
- Creates a self-cleaning surface
- Comes with a 10 year manufacturers guarantee and a 25 year proven performance
- Impregnates into timber to create an invisible protective barrier that does not alter the colour of timber or leave a sheen
- Discourages growth of moss, algae and lichens.
- Extends the lifespan of the wood, preventing discolouration and rotting



## Protection From The Weather

As an organic material, wood is prone to rotting, discolouration and a continual damaging cycle of swelling and contracting when left exposed to weathering. By preventing water absorption and keeping timber dry, ProPERLA Wood Impregnator:

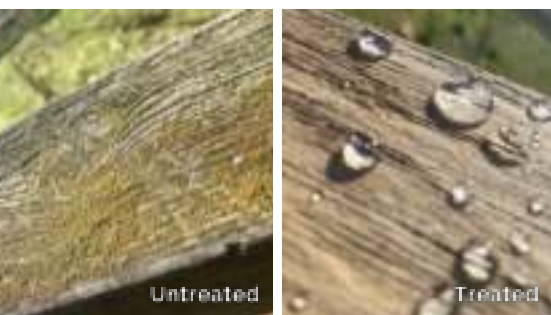
- Extends the lifespan of the wood
- Prevents rotting
- Prevents discolouration
- Minimises shrinkage
- Obstructs the growth of unsightly moss, algae and lichens
- Ensures any dirt particles cannot attach to the surface

## Proven Performance

ProPERLA Wood Impregnator has undergone independent testing and has been proven to meet the following Quality Standards:

- EAD 040287-00-04:2018 – 25 year hygrothermal performance.
- EN 15824:2009 – water absorption, water vapour permeability, tensile strength, thermal conductivity and long term durability

In the independent testing, after 25 years of accelerated weathering, timber treated with ProPERLA Wood Impregnator showed no signs of deterioration in appearance or performance. The product comes with a 10 year manufacturer's guarantee, ensuring it's long-term performance.



## Application

ProPERLA Masonry Crème is a one coat application system which can be brushed, rolled or sprayed on to bare timber surfaces. The treatment is applied in a liquid form, which penetrates into the timber in order to offer invisible waterproof protection that will not appearance of the wood in any way. This makes it ideal for use in a range of domestic & commercial settings where exterior timber is left exposed to the elements.



*Invisible protection for  
exterior timber*

**ProPERLA Wood  
Impregnator**



**Untreated**

**Treated**

# ProPERLA Paving Impregnator

**An advanced, super hydrophobic clear water repellent treatment that protects exterior paving from weathering, organic growth and staining by preventing water absorption.**  
**ProPERLA Paving Impregnator comes with a 10 year manufacturer's guarantee.**

## Key Features

- For use on all mineral surfaces, such as concrete slabs, paving stones, terraces and many more
- Manufactured in Germany using the very latest nano-technology
- Super hydrophobic coating
- Highly breathable
- Creates a self-cleaning surface
- Comes with a 10 year manufacturers guarantee
- Impregnates into paving to create an invisible protective barrier that does not alter the colour or leave a sheen
- Discourages growth of moss, algae and lichens.
- Minimises stain adherence, preventing discolouration
- UV resistant



## Protection From The Weather

Applying ProPERLA Paving Impregnator not only improves the appearance of paving stones but protects them long-term from weathering. By keeping the paving stones dry, ProPERLA Paving Impregnator:

- Extends the lifespan of paving by protecting the material against the damaging effects of rain and frost damage
- Deters the unsightly growth of moss, mildew and algae
- Prevents stains
- Improves the long term appearance of paving

## Proven Performance

ProPERLA Paving Impregnator has undergone independent testing and has been proven to meet the following Quality Standards:

- EN1504-2:2005 – depth of penetration, water absorption, resistance to alkali, drying rate and thermal conductivity
- DIN 4108 – European rating for water repellency

This performance is thanks to the high breathability of ProPERLA Paving Impregnator. Many paving 'sealers' available in the UK are far less durable as the low breathability leads to the coating failing when trapped moisture attempts to escape from the treated surface.



## Application

ProPERLA Paving Impregnator is a one coat application system which once applied to paving penetrates deep into the substrate in order to offer invisible waterproof protection that will not appearance of the paving in any way. This makes it ideal for use on patios, driveways and walkways where you want to achieve a natural look to the paving, while offering a level of protection against weathering and deterioration.



*Invisible protection for  
driveways, patios & walkways*

**ProPERLA Paving  
Impregnator**



**Treated**



**Untreated**

# ProTHERM Interior Thermal Matt

**A highly advanced thermal performance paint for interior walls and ceilings that retains heat 113% longer than a standard emulsion and significantly reduces condensation. This ensures interior walls stay warm and dry long-term.**

## Key Features

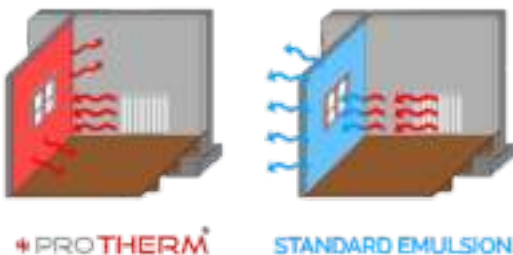
- For use on interior walls and ceilings, particularly those that are prone to mould growth
- Contains advanced Glass Microsphere Technology
- A water-based emulsion with a matt finish
- Scientifically proven to retain heat 113% longer than standard emulsion paints
- Reduces condensation
- Prevents mould and fungal growth
- Can be wallpapered or painted over using any decorative emulsion paint
- Remains breathable, allowing water vapour to escape
- Manufactured in the UK



## Keep Walls Warm

ProTHERM forms a thermal barrier on cold interior walls and ceilings by using advanced Glass Microsphere Technology. These glass microspheres become charged like a battery, enabling them to absorb any heat that passes through them. This allows this heat to be held in the wall and reflected back into the room rather than escaping through the wall.

By helping to retain heat within the building, ProTHERM improves the energy efficiency of a property, preventing heat from escaping through the internal wall and out of the building.



## Prevent Condensation and Mould

By maintaining surface temperatures on interior walls & ceilings, thus insulating air against the colder wall surface, condensation on ProTHERM treated walls is significantly reduced. Surfaces that have been painted with ProTHERM are noticeably warmer to the touch than surfaces painted with standard emulsion due to its ability to retain heat.

The reduction of condensation in turn also obstructs the growth of harmful spores such as black mould, which if left exposed to can lead to respiratory, skin and immune problems, especially to those with existing respiratory problems.



## Application

The thermal performance paint can be wallpapered or overcoated using any standard decorative emulsion paint. ProTHERM is ideal for:

- Bathrooms and kitchens
- Areas susceptible of mould growth
- Cold walls and ceilings or areas where insulation is missing
- Commercial and industrial environments
- Prefabricated buildings



*The ultimate interior heat  
retaining emulsion*

**ProTHERM Interior  
Thermal Matt**





## CONTACT US

---

### Office:

Unit 32,  
Peel Mills Industrial Estate,  
Bury,  
BL9 0LU

### Contact:

Email: [info@properla.co.uk](mailto:info@properla.co.uk)  
Phone: 0161 763 7074

[properla.co.uk](http://properla.co.uk)

### Find us on social media:

